



MONTHLY MEMBERSHIP PROGRESS REPORT

District 7 N

Results as of: 12/31/2016

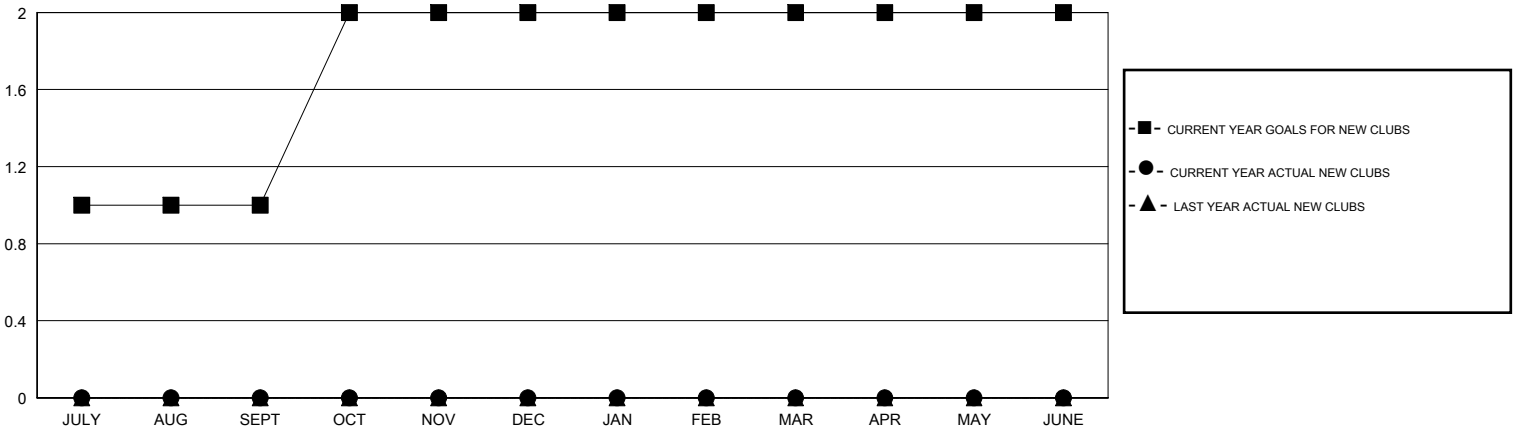
GMT: HAL GRIFFIN

LOCATION ARKANSAS

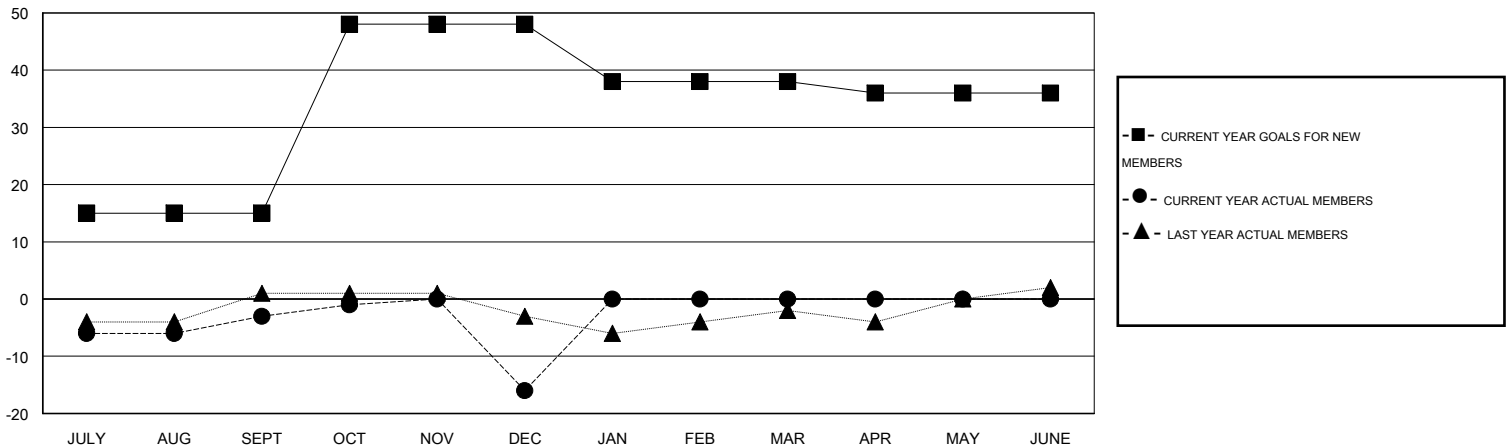
GMT CA 1

Clubs					Members				
RESULTS FOR 2016-2017					RESULTS FOR 2016-2017				
QUARTER	NEW CLUB GOAL	NEW CLUBS	DROPPED CLUBS	NET GAIN/LOSS	QUARTER	NEW MEMBER GOAL	CHARTER AND NEW MEMBERS ADDED	DROPPED MEMBERS	NET GAIN/LOSS
JULY/AUG/SEPT	1	0	0	0	JULY/AUG/SEPT	15	13	16	-3
OCT/NOV/DEC	1	0	1	-1	OCT/NOV/DEC	33	11	24	-13
JAN/FEB/MAR	0	0	0	0	JAN/FEB/MAR	-10	0	0	0
APR/MAY/JUNE	0	0	0	0	APR/MAY/JUNE	-2	0	0	0

GOALS AND ACTUAL NEW CLUBS CUMULATIVE



GOALS AND ACTUAL MEMBERS CUMULATIVE



DROPPED CLUBS: 1

14 CLUBS OF 34 ADDED 1 OR MORE NEW MEMBERS

GENDER DISTRIBUTION

MALE 455 (61.90%)
FEMALE 280 (38.10%)

DROPPED MEMBERS

DECEASED	5
CLUB CANCELLED	9
OTHER	26
TOTAL	40

[CLICK HERE FOR HEALTH ASSESSMENT DATA](#)

FAMILY UNIT MEMBERS	147
HEAD OF HOUSEHOLD	73
NON-HEAD OF HOUSEHOLD	74